



WOMAN

& The Parliament

In United Arab Emirates



THE LATE **SHEIKH ZAYED BIN SULTAN AL NAHYAN**

(MAY ALLAH REST HIS SOUL IN PEACE)

“Since the beginning, we have realized the importance of women’s participation in the national action in our contemporary society. Women are one half of society, without which the other half will fail to advance. Therefore, we have provided them with suitable educational opportunities across all educational levels, which allows them to advance their careers in a favorable, healthy educational environment. Women in our country have made great achievements through the General Women’s Union, in addition to women’s associations, which work effectively to advance the state of women, and enhance their presence and role both nationally and globally.”



**H.R.H. SHEIKH KHALIFA
BIN ZAYED AL NAHYAN**
PRESIDENT OF THE UAE

“The parliamentary action and participation journey in the UAE has always been rooted in awareness, and focused on our circumstances and needs. This experience has made us an example in democratic practice, especially due to the high participation of women in the membership and discussions in the Federal National Council. Their participation in the parliament had a real depth and made a big difference... We believe in participation as a concept, and work on providing women with all means of participation, which makes us trust that our parliamentary experience will only improve and develop with time to the best interest of our country and citizens.”



H.H. SHEIKH MOHAMMAD BIN RASHID AL MAKTOUM

VICE PRESIDENT - PRIME MINISTER OF THE UNITED
ARAB EMIRATES (UAE) - RULER OF THE EMIRATE OF DUBAI.

“Our wise leadership, the government, all society sectors, and I prioritize women’s encouragement, care and empowerment in general by providing them with opportunities for education, work, creativity and excellence in all fields, in order to achieve high leadership positions we wish for in our beloved country... We promise to continue pursuing the beneficent work and development of women and family led by H.H. Sheikha Fatima bint Mubarak, and we are confident that the Mother of the UAE is more than capable of addressing and overcoming challenges standing in the way of the our families’ highest aspirations and ambitions, activating the feminist, humanitarian and international role of women, and participation in the activities of the relevant regional and international organizations and entities.”



H.H. SHEIKH MOHAMMAD IN ZAYED AL NAHYAN

CROWN PRINCE OF ABU DHABI - DEPUTY SUPREME
COMMANDER OF THE UAE ARMED FORCES.

“The Emirati woman has been at the forefront in various fields, achieving civilizational achievements and proving her ability and perseverance, which has allowed us to highlight her role in contributing to building the nation through participating in different political, military, legal, parliamentary, executive, economical, social and media fields, as well as achieving leadership positions enabling her to make decisions, and making her an actual partner in sustainable development plans.”



سمو الشيخة فاطمة بنت مبارك
Her Highness Sheikha Fatima bint Mubarak

H.H. **SHEIKHA FATIMA
BINT MUBARAK**
CHAIRWOMAN OF THE GENERAL WOMEN'S UNION

“The political participation of women is not a goal in itself, it's rather a means through which they can serve their country. In order to succeed and excel in that regard, they must empower themselves with responsibility and sufficient awareness and knowledge.”

CONTENTS

GENERAL WOMEN'S UNION

> WHO WE ARE	07
> VISION	
> MISSION	

Women's Empowerment and Participation in Electoral Processes Speech	08
---	----

Emirati Women's Participation in the Parliament	09
---	----

National Strategy for the Empowerment & Leadership of Women in the UAE 2015-2021	10
--	----

GWU's Efforts in the First Elections 2006	11
---	----

Female Members in the Federal National Council, First Elections	12
---	----

GWU's Efforts in the Second Elections 2011	13
--	----

Female Members in the Federal National Council, Second Elections	14
--	----

GWU's Efforts in the Third Elections 2015	15-18
---	-------

Tents and Interactive Platforms	19
---------------------------------	----

Experience Exchange	20
---------------------	----

Federal National Council (FNC)	21
--------------------------------	----

UAE Gender Balance Council	22
----------------------------	----

Female Candidates in the Federal National Council Elections of 2015	23
---	----

WOMEN ASSOCIATIONS' EFFORTS IN THE THIRD ELECTIONS 2015	25
---	----

> DUBAI WOMEN'S ASSOCIATION	
-----------------------------	--

> SHARJAH UNITED WOMEN'S ASSOCIATION	26
--------------------------------------	----

> UMM AL MOUMINEEN WOMEN'S ASSOCIATION IN AJMAN	27
---	----

> UMM AL QUWAIN WOMEN'S ASSOCIATION	28
-------------------------------------	----

> AL NAHDA WOMEN'S ASSOCIATION - RAS AL KHAIMAH	29
---	----

Final Result of Women's Empowerment Efforts	30
---	----

Federal National Council Female Members in the Third Elections	31
--	----

Consultative Council of Sharjah	32
---------------------------------	----

Appendices	33-43
------------	-------

ABOUT **GWU**

GENERAL WOMEN'S UNION

WHO WE ARE

General Women's Union was established under the chairmanship of H.H. Sheikha Fatima bint Mubarak on 27th August 1975. It is the official representative of women, and the national mechanism for women's empowerment and leadership in the UAE.

VISION

General Women's Union was established under the chairmanship of H.H. Sheikha Fatima bint Mubarak on 27th August 1975. It is the official representative of women, and the national mechanism for women's empowerment and leadership in the UAE.

MISSION

GWU aims to adopt and develop the policies, plans, programs and initiatives that empower and build the capabilities of Emirati women, and eliminate the obstacles facing their participation in all sectors, to become an effective and leading element in the nation's sustainable development, take their appropriate position in society, and provide honorable examples of women's leadership in all local, regional and international events. It seeks to achieve that through vital partnerships, high competencies, services based on best global practices, and working with all segments in society and with individuals and organizations to build their capacities in supporting and empowering women.



WOMEN'S EMPOWERMENT & PARTICIPATION IN ELECTORAL PROCESSES SPEECH

In his speech, delivered on the occasion of the 34th National Day in December 2005 on the political empowerment program, H.H., Sheikh Khalifa bin Zayed Al Nahyan, the UAE President, set forth systematic rules for the process of empowering, enhancing the role of, and increasing the powers of the Federal National Council (FNC), in order to execute its duties in the best way possible, within the framework of a comprehensive political empowerment program, as a supportive authority for the executive institution. It plays a positive and effective role in alleviating the nation's issues and citizens' concerns, and seeks to instill participation and consultation values, which are among the pillars of the UAE's renaissance project.

H.H. stated, "The years ahead require a bigger role for the FNC by empowering it to be an authority that would provide great support and guidance for the executive arm of the government. We shall work to make the Council more capable, more effective and more sensitive to the issues affecting the nation and the people. This would be done by ensuring a more participatory process and the entrenchment of the policy of "Shura" consultation. And through a gradual, organized course, we have decided to start activating the role of the FNC through electing half of its members through councils for each emirate and appointing the other half. By doing this, we will embark on a march that culminates in more participation and interaction from all the citizens of the country".

The political empowerment program aims to empower and activate the role of the FNC that would provide great support and guidance for the executive arm of the government. That will be done by making the Council more capable, more effective and more sensitive to the issues affecting the nation and the people, and ensuring a more participatory process and the entrenchment of the policy of "Shura" consultation, through a gradual, organized course that culminates in more participation and of the country.

H.H. also underlined the importance of women's participation in the electoral process, complementing her role in public life, which has allowed her to actively participate and serve in different authoritative positions in the state, including obtaining membership in the FNC.

The political leadership's strong support of the participation of Emirati women in the first electoral experience – both as a candidate and voter – proves the importance of their vital and essential role in building and developing the democratic society, in which all society segments are equal, enhancing the opportunity of discussing issues that concern the Emirati women and families, as well as strengthening and contributing to the social structure in the country.

EMIRATI WOMEN'S PARTICIPATION IN THE PARLIAMENT

The UAE Leadership has prioritized women and their empowerment in various aspects of life. The Emirati woman has come to hold an extraordinary position due to the continuous support and encouragement she receives from the government and national women's empowerment mechanisms. She plays new roles in leadership, empowerment and civil service that are in direct contrast to the stereotypical roles she used to play at home, raising kids.

The General Women's Union, chaired by H.H. Sheikha Fatima bint Mubarak, Supreme Chairwoman of the Family Development Foundation, and President of the Supreme Council for Motherhood and Childhood, is leading the national efforts of women's empowerment and leadership, and ensuring their active participation in sustainable development in the UAE. It has achieved a lot of gains on many levels for Emirati women through its continuous efforts to strengthen the strategic partnerships with the government and civil society. The past years, since the delivery of the Empowerment Speech by the President in 2005, have carried opportunities for women to run and vote in the FNC elections, whereby the WGU played an essential roles in building women's capacities and raising their awareness around political participation and decision making.

H.H. Sheikha Fatima's deep insight, embodied in the strategic pillars launched in 2002, lay the foundation for women's empowerment and political participation. This strategy has foresight for the Emirati woman's future, and has provided her with what she requires to succeed in the parliament despite the little experience.

NATIONAL STRATEGY FOR THE EMPOWERMENT & LEADERSHIP OF WOMEN IN THE UAE 2015-2021

In light of the success of Strategy 2022, and the leap that women's empowerment and leadership have achieved in the UAE, the National Strategy for Empowerment of Emirati Women was updated in 2015 and aligned with the Federal Government's Vision 2021 and the Abu Dhabi Strategy 2030, to suit women's emerging and persistent needs.

H.H. Sheikha Fatima bint Mubarak, Chairwoman of GWU, Supreme Chairwoman of the Family Development Foundation, and President of the Supreme Council for Motherhood and Childhood, the National Strategy for the Empowerment and Leadership of Women in the UAE (2015-2021), to provide a general framework serving as a reference for all (local and federal) public institutions, and public and civil society organizations, in developing plans and action plans that provide women with a good life, empower them to lead, and ensure their active participation in all areas of sustainable development. The strategy helps sustain women's gains, build their capacities and expand the scope of their developmental participation.

Political participation and decision making are an intrinsic pillar in the National Strategy for Empowerment of Emirati Women, launched by H.H. Sheikha Fatima bint Mubarak "Mother of the UAE" in 2002, which consists of 8 pillars: education, health, economy, social aspect, legislation, environment, media, and political participation and decision making.

GWU has played an essential role in all three elections of the FNC (2006, 2011, 2015) in cooperation with strategic partners. Here you can find an overview of its initiatives and activities in that regard.

> Increasing the quantity and quality of women's participation in different areas and their representation in leadership and decision making roles to enhance the Emirati woman's image on all levels.

> Maintaining the sustainability of the Emirati women's achievements, continue achieving further gains, and continue to build women's capacities to expand the scope of their developmental participation.

GWU'S EFFORTS

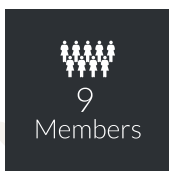
IN THE FIRST ELECTIONS 2006

Under the directions of H.H. Sheikha Fatima bint Mubarak, Chairwoman of GWU, GWU has launched the “Enhancing the Role of Arab Female Parliamentarians” project in cooperation with the UNIFEM in the period 2004 – 2007, which has served as the pillar for qualifying women to be in the parliament. Beneficiaries of the project included 70 women leaders from all society sectors and emirates in the country. The project raised awareness and knowledge around parliamentary work, built the capacities of Emirati women in political participation and decision making, and empowered them to make changes through participating in the electoral process.

Enhancing the Role of Arab Female Parliamentarians Project has helped, especially in the last two years, change the cultural patterns in society and direct them towards accepting and valuing the importance of women's participation in the parliament.

The political participation of Emirati women in the first Elections of the FNC in 2006 is a total paradigm shift in parliamentary work, where women were allowed to vote and run. This opportunity communicates clearly the importance of female presence in the political scene in the UAE. Dr. Amal Al Qubaisi was appointed representative of Abu Dhabi as the first elected female to the FNC, which proves that society trusts women and their abilities. In this cycle, women made nine out of 40 seats, and 22.2% after appointing eight more women.





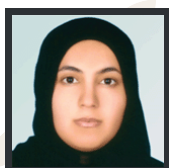
22,2 %

WOMEN



Dr. Ayshah
AL ROOMI

APPOINTED



Dr. Nedal
AL TENAIJI

APPOINTED



Alia
AL SUWAIDI

APPOINTED



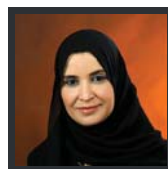
Maysa
GHADEER

APPOINTED

FEMALE MEMBERS
IN THE FEDERAL NATIONAL COUNCIL, FIRST ELECTIONS

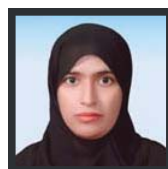
Dr. Amal
AL QUBAISI

APPOINTED



Fatema
AL MAZROOEI

APPOINTED



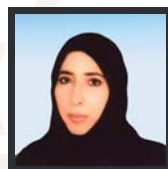
Rowayyah Saif Sultan
AL SAMAH

APPOINTED



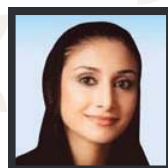
Fatma
AL MARRI

APPOINTED



Najla
AL AWADHI

APPOINTED



GWU'S EFFORTS

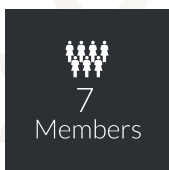
IN THE SECOND ELECTIONS 2011

The second elections of 2011 gained more importance than the first due to the expansion in participation in the electoral base.

GWU continued its efforts in building the Emirati women's capacities to qualify for participation in the parliamentary elections, especially after the significant presence of women in the electoral college at 46% of the total participation. GWU commenced the second elections by building a strategic partnership with the Ministry of State For Federal National Council Affairs that resulted in organizing an intensive program targeting women that aimed at enhancing their participation. It began with an introductory seminar in the GWU Headquarters in Abu Dhabi by H.H. Dr. Anwar Mohammed Gargash, an exceptional effort, made even more significant by the attendance of Sheikha Elyazieh bint Zayed Al Nahyan and a number of prominent women and candidates. GWU has also conducted a survey made out of seven categories on women's participation in the FNC, which contained a lot of questions on women's participation in the political life.

Dr. Sheikha Issa Ghanem Al Ari was elected in Umm Al Quwain, and 6 women were assigned, representing in total 17.5% of the FNC members.





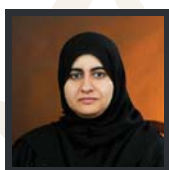
17,5 %

WOMEN

FEMALE MEMBERS
IN THE FEDERAL NATIONAL COUNCIL, SECOND ELECTIONS

**Dr. Amal
AL QUBAISI**

First deputy speaker of the
FEDERAL NATIONAL COUNCIL

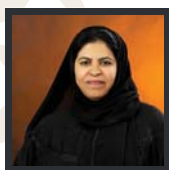
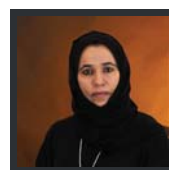


**Dr. Shaikha
AL OWAIS**

APPOINTED

**Dr. Sheikha
AL ARI**

ELECTED

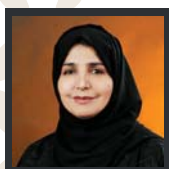
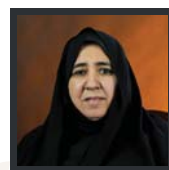


**Dr. Mona
AL BAHAR**

APPOINTED

**Aisha
AL YAMAHI**

APPOINTED

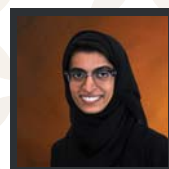


**Afra
AL BASTI**

APPOINTED

**Noura
AL KAABI**

APPOINTED





GWU'S EFFORTS

GWU'S EFFORTS IN THE THIRD ELECTIONS 2015

GWU prioritized developing a strategic partnership with the Ministry of State For Federal National Council Affairs, in order to activate women's role in political participation and decision making. Both parties signed an MoU on 15 October 2014, which stipulates partnership and cooperation between them to implement joint programs and activities that aim to raise political awareness among UAE national women across the country, conduct studies and research, organize conferences, seminars, discussions and trainings in political awareness, and, most importantly, instill the culture of political participation among Emirati women specifically.

To activate this MoU, GWU made sure to play a huge role in the 2015 elections, through supporting women's participation in the parliament across all emirates, in cooperation with the ministry and National Election Commission, and in coordination with different women's associations in the country.

In this context, GWU launched "Be Part of the Action" Program, which included a number of different events and activities.

Among the winners was Na'ima Abdullah Saeed Al Sharhan in Ras Al Khaimah. And, convinced that the role of women in the parliament is vital, the government appointed eight more women, which resulted in nine women, or 22.2% representation in the FNC.

TABLE 1 DEMONSTRATES THE GWU'S EFFORTS

TO QUALIFY WOMEN AND INCREASE THEIR COMPETENCE
IN POLITICAL PARTICIPATION AND DECISION MAKING.

		DATE	PLACE
1	SEMINAR: Women and the FNC... March of Empowerment	25 MAY 2014	GWU
2	Signing MoU with the Ministry of State For Federal National Council Affairs	15 OCT 2014	GWU
3	SEMINAR: Women and the FNC... March of Empowerment	20 NOV 2014	FUJAIRAH
4	SEMINAR: Women and the FNC... March of Empowerment	18 MAR 2015	Umm Al Moumineen Women's Association in Ajman
5	Women and Political Participation Workshop, by German expert and consultant Prof. Ali Mousa	8-10 JUN 2015	GWU
6	Lecture on FNC 2015 elections by H.H. Dr. Anwar Gargash	27 JUL 2015	GWU
7	Lecture on women's political empowerment	13 AUG 2015	Al Nahda Women's Association - Ras Al Khaimah
8	Participation in the media conference regarding the election center teams' training and qualification program	26 AUG 2015	DUBAI
9	Lecture on FNC 2015 elections and women's empowerment by Dr. Sa'id Al Ghafli	30 AUG 2015	Sharjah United Women's Association



To serve this purpose, and enhance the participation of women in the parliament, FWU has created interactive platforms (“tents”) in various emirates in cooperation with women’s associations. They aimed to provide candidates with a chance to present their election program and communicate their message to the voters, and voters with the opportunity to drive women’s empowerment efforts forward by electing the women that are capable of representing their issues in the FNC, and ensure their active participation. In line with the smart federal government’s vision, GWU employed social media to raise awareness around the significance of the event and importance of participation, in addition to issuing print media and booklets.



TENTS & INTERACTIVE PLATFORMS

To support women's political participation, the GWU formed a team to supervise the events of the political empowerment program for 2015 elections. The team held meetings with the National Election Commission, and identified connection points between GWU, the commission, and women's associations in the country, in order to facilitate coordination and cooperation.

In this context, the "GWU Tent" was set up as an interactive platform outside the GWU with a 200-person capacity. It was fully technically equipped, to allow female candidates to present their programs and get their messages across easily and smoothly.

GWU has also followed organized procedures in coordination with the National Election Commission, in order to obtain candidate lists and contact information in each emirate, coordinate with stakeholders and women's associations, and then set timetables for candidates to present their election programs, according to the timetable of the event organizers.



EXPERIENCE EXCHANGE

In the GWU's spirit of experience exchange and leveraging best global practices, President of the French Emirates Friendship Commission in the National Assembly (French Parliament) and accompanying delegation, visited the union to learn about the efforts of women's empowerment and support in political participation and decision making. GWU is considered the first to launch "Enhancing the Role of Arab Female Parliamentarians" project in cooperation with UNIFEM 2004-2007, which included seminars and training workshops on the national level. It continued to support women throughout the electoral experience and parliamentary life through the political empowerment program: "Be Part of the Action", which included lots of activities.

The delegation visited the GWU's tent, one of the interactive platforms that were held in various emirates in coordination with women's associations, in order to support women's political participation and provide 2015 FNC candidates in all emirates with the opportunity to present their programs and get their messages across to voters.



It is also worth mentioning that the efforts of H.H. Sheikha Fatima bint Mubarak, Chairwoman of GWU, Supreme Chairwoman of the Family Development Foundation, and President of the Supreme Council for Motherhood and Childhood, in political empowerment have paid off, raising women's political participation. The delegation viewed the best practices and successful experiences in political empowerment and decision making with the attendance of Noura Mohammad Hilal Al Kaabi, member of FNC in its previous cycle, and a number of 2015 candidates, among which: Dubai candidate Azzza bint Suleiman, Abu Dhabi candidates Buthaina Salem Al Qubaisi, Mouna Majed Al Mansouri and Aisha Al Zu'abi. Certain election program examples were shown, and the delegation reviewed the Emirati woman's political experience.

GWU made sure to leverage all opportunities and chances that might serve its purpose to empower women in politics and decision making. Social media played a huge role, spreading information and communicating with readers and surfers. A number of awareness messages were directed at women and society using the GWU's Instagram page, and the booklet, "The Emirati Woman's Guide to Political Participation", was released.



UAE GENDER BALANCE COUNCIL

The UAE Gender Balance Council is among the mechanisms dedicated to women. It has, under the guidance of H.H. Sheikha Manal bint Mohammad bin Rashid Al Maktoum, Chairwoman of the UAE Gender Balance Council and President of Dubai Women Establishment, wife of H.H. Mansour bin Zayed Al Nahyan, deputy prime minister of the UAE and minister of presidential affairs, played an important role in the 2015 elections. UAE Gender Balance Council signed an MoU with the National Election Commission, to increase the participation of Emirati women in the FNC elections 2015, an important part of the council's priorities, which allows women to contribute to the different developmental processes the country is witnessing in all areas. The MoU was signed by H.H. Dr. Anwar Gargash, minister of state for federal national council affairs, minister of state for foreign affairs and president of UAE Gender Balance Council, and Mona Ghanem Al Marri, vice president of the UAE Gender Balance Council. The council has also established a communications center to increase Emirati women's engagement in the electoral process, encourage them to practice their constitutional right and leverage the empowering environment provided to them by the country under our good leadership, raising their awareness around one of their very essential duties, and motivate them to participate in voting, under the framework of the council's pursuit to increase women's political participation in general, enhance their role in society, support them with all the fundamentals required to ensure their presence in all work fields, as a complementation of their roles as mothers and educators of future generations, and their being a vital part of society.



FEMALE CANDIDATES

IN THE FEDERAL NATIONAL COUNCIL ELECTIONS OF 2015

ABU DHABI CANDIDATES

24 CANDIDATES

> Iman Mohammad Rashid Saif	AL MARRI	> Aisha Issa Ali	AL ZU'ABI
> Buthaina Salem Sa'id	AL QUBAISI	> Fatima Jassem Jassem	AL ZU'ABI
> Bakhita Mohammad Salem Abeed	AL DAR'I	> Maryam Mohammad Jum'a	AL RUMAITHI
> Halima Mohammad Khalfan	AL MUQBALI	> Mazna Salem Mohammad	AL MANSOURI
> Dalal Sa'id Muhair	AL QUBAISI	> Mona Majed Mohammad	AL MANSOURI
> Rawda Mohammad Khamis	AL QUBAISI	> Mona Mubarak Mohammad	AL QUBAISI
> Reem Nasser Sa'id Ahmad	AL OTAIBA	> Mahra Salem Ahmad	AL ALI
> Samia Abdullah Al Sheikh	AL SHAMSI	> Moza Al Rida Saif	AL MANSOURI
> Salamah Mohammad Jaryo	AL MANSOURI	> Moza Salem Bilhabalah	AL KUTOBI
> Shamma' Khamis Abid	AL HAML	> Moza Ali Saleh	AL KUWAITI
> Sheikha Rashid Salem	AL SUWAIDI	> Maitha Sa'id Mohammad	AL RUMAITHI
> Aisha Salem Mohammad	AL KHAILI	> Nuha Rashid Salem	AL QUBAISI

DUBAI CANDIDATES

21 CANDIDATES

> Ibtisam Mohammad Irhamah	AL SUWAIDI	> Iman Mohammad Rashid Saif	AL MARRI
> Asmaa' Khalifa Mata	AL MAZYANAH	> Aza Suleiman Mohammad	AL MALEK
> Amal Suheil Hmoud	AL WISHAHI	> Awsha Said Buta	AL MAZROU'I
> Amina Khalifa Humaid	AL FALLASI	> Fatima Sultan Al Jarrah	AL KUTOBI
> Hamda Khalifa Matar	SA'ID	> Kaltham Abdullah Salem	AL NAWBI
> Rasha Sharif Ahmad	AL THANHANI	> Kaltham Mohammad Youssef	AL SHIBAANI
> Salwa Abdullah Ahmad	AL SUWAIDI	> Laila Youssef Mohammad	AL JISMI
> Sumayya Rashid Musbeh	AL MUHAIRI	> Maryam Ali Al Thani	AL FALLASI
> Seham Abdullah Hamad Ali	AL FALLAHI	> Ma'ima Jum'a Sa'id	FAIROUZ
> Shahinaz Ahmad Abdul Razzaq	AL BASTAKI	> Noura Abdul Aziz	AL RUSTMANI
> Salha Khalifa Lahej	AL FALLASI		

FEMALE CANDIDATES

IN THE FEDERAL NATIONAL COUNCIL ELECTIONS OF 2015

SHARJAH CANDIDATES

11 CANDIDATES

> Amnah Mas'oud Mubarak Al Malla	AL HAMADI	> Moza Mu'dad Sa'id	AL KUTOBI
> Salma Mohammad Obaid	AL KUTOBI	> Najla' Issa Mohammad	AL ANSARI
> Aisha Ahmad Salem	AL SUWAIDI	> Nidaa' Ali Youssef	AL RA'ISI
> Aisha Jum'a Hassan	AL ALI	> Noura Youssef Khalfan Obaid	BIN SANDAL
> Aisha Salem Ahmad	BIN SIMNOWWA	> Wafaa' Ahmad Ali	AL HAMADI
> Maryam Mohammad Obaid Rashed	AL NU'AIMI		

AJMAN CANDIDATES

4 CANDIDATES

> Iman Obaid Jum'a	AL SAWM	> Afraa' Bakhit Saif	AL OLAILI
> Sarah Rabi' Yaqout	AL NU'AIMI	> Noura Ibrahim Salem	AL MARRI

UMM AL QUWAIN CANDIDATES

3 CANDIDATES

> Sheikha Issa Ghanem	AL ALI	> Hind Isma'il Za'al bin	AL ALI
> Aisha Abdullah	AL ALI		

RAS AL KHAIMA CANDIDATES

5 CANDIDATES

> Badreyya Abdu Latif Khalifa	AL SHUHHI	> Mona Jum'a Sa'id	AL ALI
> Sheikha Salem Hassan	AL SHUHHI	> Na'ma Abdullah Sa'id	AL SHARHAN
> Aisha Salem Ibrahim	AL ZU'ABI		

FUJAIRAH CANDIDATES

7 CANDIDATES

> Ibtisam Khalfan Sultan	AL LOUGHANI	> Ghanima Obaid Mohammad	AL HAFITI
> Amna Khalfan Rashid Sa'id	AL KINDI	> Fatima Hamid Abdullah	AL MAZMI
> Khulood Hassan Ali	AL SHUHHI	> Futaim Obaid Hassan	AL SHUHHI
> Aisha Obaid Mohammad	AL SAMAH		

WOMEN ASSOCIATIONS' EFFORTS IN THE THIRD ELECTIONS 2015

DUBAI
Women's Association 

In order to implement the Dubai Women's Association's awareness and national identity strengthening approach, celebrate the Emirati democracy, emphasize this exceptional step for our blessed country, instill the culture of political citizenship and national participation, and emphasize the women's role in empowerment and development, DWA organized a forum to present the FNC candidates' election programs for the 2015 elections, serving as a bridge between candidates and voters, enhancing popular participation, and intensifying candidate ads, as it, as part of a woman's sector, believes that this support is a national duty that will increase women's participation in politics.





SHARJAH UNITED Women's Association

Sharjah United Women's Association seeks to lead the way in supporting activities and events contributing to developing and serving society. It had a significant role in supporting women's political participation in Sharjah. It organized meetings for the 2015 FNC candidates in the Sharjah districts' councils, which are governmental councils with the purpose of holding different events concerning people in each area, under the umbrella of the Districts and Villages Affairs Department in Sharjah. The meetings aimed to encourage candidates to present their candidacy programs.



UMM AL MOUMINEEN Women's Association in Ajman



Umm Al Moumineen Women's Association in Ajman played a vital role in supporting the FNC 2015 candidates. It held a tent (interactive platform) for the emirate's candidates in Al Jarf near City Center for two days. Official invitations were sent to the government's departments and institutions in Ajman, the event was advertised for on the association's social media, and the audience was invited to attend the presentations and support the candidates.





UMM AL QUWAIN Women's Association

In response to the GWU's call to establish interactive platforms for candidates in each emirate, Umm Al Quwain Women's Association held a tent outside its headquarters to support and empower the new FNC election candidates in presenting their election programs, hold training workshops, present candidates to the society, introduce their national plans and programs, and enhance communication and popular participation between candidates and society.



AL NAHDA

Women's Association in Ras Al Khaimah

Al Nahda Women's Association – RAK made sure to have a strong presence in the domain of political participation. It held its interactive platform on Al Qawasim Corniche on 13-17/9/2015 to provide candidates with the opportunity to present their election programs and meet with the voters.



FINAL RESULT OF WOMEN'S EMPOWERMENT EFFORTS

Thanks to the unlimited support women receive in the UAE from the leadership, and the national efforts to empower and assist women in their parliamentary life, they have been able to succeed and participate in decision making.

These efforts have shown results, with nine women entering the FNC (more than 22% of members) in its 16th cycle, and one woman, Na'ima Al Sharhan from Ras Al Khaima, winning the elections.

Electing H.H. Dr. Amal Abdullah Al Qubaisi president of FNC, as first female president of a parliament in the Arab World, proves the level of attention given to Emirati women, their success and the progress and advancement of the country as a whole in all sectors.





22,5 %

WOMEN



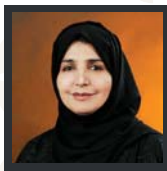
Dr. Nedal
AL TUNAIJI

APPOINTED



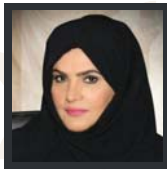
Aisha
AL ALI

APPOINTED



Afra'
AL BASTI

APPOINTED



Na'ma
AL SHARHAN

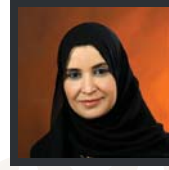
ELECTED

FEMALE MEMBERS
IN THE FEDERAL NATIONAL COUNCIL, THIRD ELECTIONS

Dr. Amal
AL QUBAISI

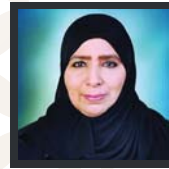
FNC President

APPOINTED



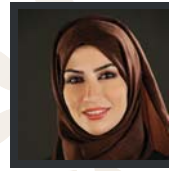
Aisha
SEMNOWWA

APPOINTED



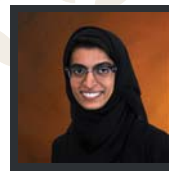
Azza
SULEIMAN

APPOINTED



Noura
AL KA'BI

APPOINTED



CONSULTATIVE COUNCIL OF SHARJAH

The Consultative Council of Sharjah experience is at the forefront in terms of supporting women. The council has appointed female members before, whereas Sheikh Dr. Sultan bin Mohammad Al Qasimi, sovereign ruler of the Emirate of Sharjah and is a member of the Federal Supreme Council, has issued Law No. 9 of 2015 as an amendment of Law No.3 of 1999 concerning establishing the Consultative Council. Important changes have been made to the member selection process, including selecting half members through election and the other half through appointment.

Women have played an important role and their presence has been significant in the 2016 elections of the Consultative Council of Sharjah, by fully practicing their roles as voters and candidates alike. This has given them access to important leadership positions, making their presence in the council an opportunity to participate in decision making, contribute to the national developmental process, and be a real partner of men in continuing Sharjah's journey of leadership and the UAE's civilizational achievements.

Fatima Ali Humaid Al Muhairi was elected a member of the council, and 6 other women were appointed, whereas Mrs. Khawla Abdul Rahman Al Malla was elected president of the council.





APPENDICES

GWU'S EFFORTS IN FEDERAL NATIONAL COUNCIL COMMITTEES

14th Legislative Term **TABLE 2**

	Office Staff	Committee on Defence & Internal Affairs	Committee on Financial, Economical & Industrial Affairs	Committee on Legal & Legislative Affairs
1st	LEGISLATURE			
	DR. NEDAL ALTUNAJI Member of the Executive Council of the Parliamentary Division	MAISA RASHID GHAEER Member		
2nd	LEGISLATURE			
	DR. AMAL AL QUBAISI Member of the Inter-Parliamentary Union Council		DR. NEDAL ALTUNAJI Member	
	FATIMA AL MARZOU'I Member of the Arab Parliamentary Union Council			
	NEDAL ALTUNAJI Member of the Parliamentary Division in the Transitional Arab Parliament			
3rd	LEGISLATURE			
	TIMAAL MARRI Member of the Opening Speech Response Committee		DR. NEDAL ALTUNAJI Member	
	AMAL AL QUBAISI Member of the Executive Council of the Parliamentary Division			
	FATIMA AL MARZOU'I Member of the Arab Parliamentary Union Council			
	NEDAL ALTUNAJI Member of the Parliamentary Division in the Transitional Arab Parliament			

Committee on Educational, Youth, Media and Cultural Affairs	Committee on Health, Labor & Social Affairs	Committee on External Affairs, Planning, Petrol, Mineral Resources, Agriculture & Fish Resources	Committee on Islamic Affairs, Endowments & General Utilities	Committee on Examination of Appeals & Complaints
DR. AMAL AL QUABAISI President	DR. FATIMA AL MAZROU'I Decision Maker	MAISA' RASHID GHADEER Member	ROWAYYA AL SAMAHI Member	
FATIMA AL MARRI Member	DR. AMAL AL QUABAISI Member	NAJLA' ALAWADI Member	DR. AISHA AL RUMI Member	
DR. FATIMA AL MAZROU'I Member	ALIA AL SUWEIDI Member		FATIMA AL MARRI Member	
DR. NEDAL AL TUNAJI Member	ROWAYYA AL SAMAHI Member		DR. NEDAL AL TUNAJI Member	
DR. AMAL AL QUABAISI President	DR. FATIMA AL MAZROU'I Decision Maker	DR. AMAL AL QUABAISI Member	DR. NEDAL AL TUNAJI President	MAISA' RASHID GHADEER Member
NAJLA' ALAWADI Member	DR. AISHA AL RUMI Member		ROWAYYA AL SAMAHI Member	
H.H. FATIMA AL MARRI Member	H.H. ALIA AL SUWEIDI Member		DR. AISHA AL RUMI Member	
DR. FATIMA AL MAZROU'I Member	ROWAYYA AL SAMAHI Member		FATIMA AL MARRI Member	
				MAISA' RASHID GHADEER President

14th Legislative Term **TABLE 2**

	Office Staff	Committee on Defence & Internal Affairs	Committee on Financial, Economical & Industrial Affairs	Committee on Legal & Legislative Affairs
4th	LEGISLATURE			
	AJLA'ALAWADI Secretary for the Executive Council of the Parliamentary Division			
	FATIMAAL MARZROU'I Member of the Arab Parliamentary Union Council Member of the Parliamentary Division in the Transitional Arab Parliament			
	TIMAAL MARRI Member of the Opening Speech Response Committee			
	MAISA'RASHID Member of the Opening Speech Response Committee			
	AMALAL QUBAISI Member of the Inter-Parliamentary Union Council			
	NEDALAL TUNAJI Member of the Parliamentary Division in the Transitional Arab Parliament			
5th	LEGISLATURE			
	AJLA'ALAWADI Member of the Executive Council of the Parliamentary Division			
	FATIMAAL MARZROU'I Secretary for the Executive Council of the Parliamentary Division			
	TIMAAL MARRI Member of the Opening Speech Response Committee			
	AMALAL QUBAISI Member of the Inter-Parliamentary Union Council			
	NEDALAL TUNAJI Member of the Parliamentary Division in the Transitional Arab Parliament			

Committee on Educational, Youth, Media and Cultural Affairs	Committee on Health, Labor & Social Affairs	Committee on External Affairs, Planning, Petrol, Mineral Resources, Agriculture & Fish Resources	Committee on Islamic Affairs, Endowments & General Utilities	Committee on Examination of Appeals & Complaints
FATIMA AL MARRI Member	DR. FATIMA AL MAZROU'I Decision Maker		DR. NEDAL AL TUNAJI Member	MAISA' RASHID GHADEER President
DR. AMAL AL QUABAISI Member	DR. AISHA AL RUMI Member		ROWAYYA ALSAMAHI Member	
DR. AMAL AL QUABAISI Member	ROWAYYA ALSAMAHI Member		DR. AISHA AL RUMI Member	
			FATIMA AL MARRI Member	
H.H. FATIMA AL MARRI Member	DR. FATIMA AL MAZROU'I Decision Maker		DR. NEDAL AL TUNAJI President	MAISA' RASHID GHADEER President
DR. AMAL AL QUABAISI Member	ALIA' ALSUWEIDI Member		ROWAYYA ALSAMAHI Member	
NAJLA' ALAWADI Member	DR. AISHA AL RUMI Member		DR. AISHA AL RUMI Member	
	ROWAYYA ALSAMAHI Member		FATIMA AL MARRI Member	

15th Legislative Term **TABLE 3**

	Office Staff	Committee on Defence & Internal Affairs	Committee on Financial, Economical & Industrial Affairs	Committee on Legal & Legislative Affairs
1st	LEGISLATURE			
	DR. AMAL ALQUBAISI First Vice President Member of the Inter-Parliamentary Union Council	DR. MOUNA ALBAHR Member		
	DR. MOUNA ALBAHR Member of the Inter-Parliamentary Union Council	DR. AMAL ALQUBAISI Member		
	AFRA'AL BASTI Member of the Arab Parliamentary Union Council			
	SHEIKHA ALI ALOWAIS Member of the Organization of Islamic Cooperation Member States' Councils Union			
	SHEIKHA ISSA ALARRI Member of the Arab Parliamentary Union Council			
2nd	LEGISLATURE			
	DR. AMAL ALQUBAISI First Vice President Member of the Inter-Parliamentary Union Council			
	SHEIKHA ALI ALOWAIS Member of the Organization of Islamic Cooperation Member States' Councils Union			
	SHEIKHA ISSA ALARRI Member of the Arab Parliamentary Union Council			
	NOURA AL K'ABI Member of the Human Rights Committee			
	DR. MOUNA ALBAHR Member of the Committee Presidents Committee			

Committee on Educational, Youth, Media and Cultural Affairs	Committee on Health, Labor & Social Affairs	Committee on External Affairs, Planning, Petrol, Mineral Resources, Agriculture & Fish Resources	Committee on Islamic Affairs, Endowments & General Utilities	Committee on Examination of Appeals & Complaints
DR. MOUNA ALBAHR President	SHEIKHA ALI ALOWAIS Member	AFRA' ALBASTI Decision Maker	AISHA ALYAMAHI Member	AFRA' ALBASTI Decision Maker
	SHEIKHA ISSA ALARRI Decision Maker	SHEIKHA ISSA ALARRI Member		
	AISHA ALYAMAHI Member			
	NOURA MOHAMMAD ALKABI Member			
DR. MOUNA ALBAHR President	SHEIKHA ISSA ALARRI Member	AFRA' ALBASTI Member	AISHA ALYAMAHI Member	AFRA' ALBASTI Decision Maker
	NOURA MOHAMMAD ALKABI Member	SHEIKHA ALI ALOWAIS Member		
	AISHA ALYAMAHI Member			
	SHEIKHA ISSA ALARRI Member			

15th Legislative Term **TABLE 3**

	Office Staff	Committee on Defence & Internal Affairs	Committee on Financial, Economical & Industrial Affairs	Committee on Legal & Legislative Affairs
3rd	LEGISLATURE			
	DR. AMAL ALQUBAISI First Vice President Member of the Inter-Parliamentary Union Council	DR. AMAL ALQUBAISI Member		
	SHEIKHA ALOWEIS Member of the Opening Speech Response Committee Member of the Organization of Islamic Cooperation Member States' Councils			
	SHEIKHA ISSA ALARRI Member of the Arab Parliamentary Union Council			
	AFRA' AL BASTI Member of the Human Rights Committee Member of the Committee Presidents Committee			
	AISHA AL YAMAHI Member of the Human Rights Committee			
4th	LEGISLATURE			
	DR. AMAL ALQUBAISI First Vice President Member of the Inter-Parliamentary Union Council	DR. AMAL ALQUBAISI Member		
	SHEIKHA ALOWEIS Member of the Opening Speech Response Committee			
	AFRA' AL BASTI Member of the Organization of Islamic Cooperation Member States' Councils			
	SHEIKHA ISSA ALARRI Member of the Arab Parliamentary Union Council			
	AISHA AL YAMAHI Member of the Human Rights Committee			
	DR. MOUNA AL BAHR Member of the Committee Presidents Committee			

Committee on Educational, Youth, Media and Cultural Affairs	Committee on Health, Labor & Social Affairs	Committee on External Affairs, Planning, Petrol, Mineral Resources, Agriculture & Fish Resources	Committee on Islamic Affairs, Endowments & General Utilities	Committee on Examination of Appeals & Complaints
DR. MOUNA ALBAHR President	AISHA RASHID ALYATEEM Member	NOURA AL KABI Member	AFRA AL BASTI Decision Maker	
	NOURA AL KABI Member	SHEIKHA ALOWEIS Member		
	AISHA AHMAD ALYAMAHI Member			
	SHEIKHA ISSA ALARRI Member			
DR. MOUNA ALBAHR President	DR. SHEIKHA ISSA ALARRI Member	AFRA AL BASTI Decision Maker	NOURA AL KABI Member	
NOURA MOHAMMAD AL KABI Member	SHEIKHA ALI ALOWEIS Member			
	AISHA AHMAD ALYAMAHI Member			

16th Legislative Term **TABLE 4**

1 st	LEGISLATURE	Office Staff	Committee on Defence & Internal Affairs	Committee on Financial, Economical & Industrial Affairs	Committee on Legal & Legislative Affairs
	DR. AMAL AL QUBAISI Council President		AISHA RASHID AL YATEEM Member		
	AISHA SALEM BIN SEMNOWWA Member of the Opening Speech Response Committee Member of the Arab Parliamentary Union Council Member of the Friendship with Arab Parliaments Committee Member of the Committee Presidents Committee		NOURA AL KABI Member		
	AZZABIN SULEIMAN Member of the Opening Speech Response Committee Member of the Organization of Islamic Cooperation Member States' Councils Union				
	NA'IMA AL-SHARHAN Member of the Opening Speech Response Committee Member of the Arab Parliamentary Union Council Member of the Friendship with GCC Parliaments Committee				
	AFRA' AL BASTI Member of the Inter-Parliamentary Union Council Friendship with Asian Parliaments Committee				
	AISHA RASHID AL YATEEM Vice President of the Arab Parliamentary Union Council Member of the Friendship with Arab Parliaments Committee				
	ALIJA SULEIMAN AL Member of the Friendship with African Parliaments Committee				
	DR. NEDAL ALTUNAJJI Member of the Friendship with African Parliaments Committee				
	NOURA AL KABI Member of the Friendship with Latin and South American Parliaments Committee				

Committee on Educational, Youth, Media and Cultural Affairs	Committee on Health, Labor & Social Affairs	Committee on External Affairs, Planning, Petrol, Mineral Resources, Agriculture & Fish Resources	Committee on Islamic Affairs, Endowments & General Utilities	Committee on Examination of Appeals & Complaints
NAI'MA AL-SHARHAN President	AISHARASHID AL-YATEEM Member	AZZABIN SULEIMAN Member	AISHASALEMBIN SEMNOWWA President	ROWAYYAAL SAMAH Member
AISHASALEMBIN SEMNOWWA Member	ALIASULEIMAN AL-JASSEM Member	DR.FATIMAAL MAZROU'I Decision Maker	AFRA' ALBASTA Member	AZZABIN SULEIMAN Member
NAJLA' ALAWADI Member	ROWAYYA AL-SAMAH Member		DR.AISHA ALRUMI Member	







@UAEGWU
www.gwu.ae